

20260602_091716.jpg



20260602_091721.jpg



20260602_091727.jpg



20260602_091732.jpg



20260602_091738.jpg



AGENT'S





ET









20260602_091815.jpg



TIRE AND LOADING INFORMATION
RENSEIGNEMENTS SUR LES PNEUS ET LE CHARGEMENT

The weight of the cargo should never exceed 2375 kg or 5236 lbs.
Le poids du chargement ne doit jamais dépasser 2375 kg ou 5236 lb.

TIRE PNEU	SIZE DIMENSIONS	COLD TIRE PRESSURE PRESSION DES PNEUS A FROID	SEE OWNER'S MANUAL FOR ADDITIONAL INFORMATION
FRONT AVANT	ST205/75R15	413 KPA / 60 PSI	VOIR LE MANUEL DE L'USAGER POUR PLUS DE RENSEIGNEMENTS. FD-337
REAR ARRIERE	ST205/75R15	413 KPA / 60 PSI	
SPARE DE SECOURS	ST205/75R15	413 KPA / 60 PSI	

7PKBE1423P1004240

MANUFACTURED BY/FABRIQUE PAR: SEED CARGO DATE: 07/2023
GVWR / PNBV 3175 KG (7000 LB)
GAWR (EACH AXLE) / PNBE (CHAQUE ESSIEU) 3175 KG (7000 LB)
TIRE/PNEU ST205/75R15 RIM/JANTE SILVER
COLD INFL. PRESS/PRESS. DE GONFL. A FROID 413.7 KPA (60 PSI) (CP) SINGLE
THIS VEHICLE CONFORMS TO ALL APPLICABLE U.S. FEDERAL MOTOR VEHICLE SAFETY STANDARDS IN EFFECT ON THE DATE OF MANUFACTURE SHOWN ABOVE. THIS VEHICLE
CONFORMS TO ALL APPLICABLE STANDARDS PRESCRIBED UNDER CANADIAN MOTOR VEHICLE SAFETY REGULATIONS IN EFFECT ON THE DATE OF MANUFACTURE. / -CE
VEHICULE EST CONFORME A TOUTES LES NORMES QUI LUI SONT APPLICABLES EN VERTU DU REGLEMENT SUR LA SECURITE DES VEHICULES AUTOMOBILES DU CANADA EN
GOUVERN. A LA DATE DE SA FABRICATION.

V.I.N.: 7PKBE1423P1004240 TYPE: TRA/REM MODEL: TX14TA2



20260602_091837.jpg







20260602_091918.jpg



20260602_091920.jpg



20260602_091929.jpg



20260602_091931.jpg



20260602_091933.jpg



20260602_091935.jpg



20260602_091937.jpg





20260602_091943.jpg







20260602_093314.jpg





20260602_093319.jpg





MANUFACTURED BY/FABRIQUE PAR: SEED CARGO
GVWR / PNBV 3175 KG (7000 LB)
GAWR (EACH AXLE) / PNBE (CHAQUE ESSIEU) 3175 KG
TIRE/PNEU ST205/75R15 RIM/JANTE SILVER
COLD INFL. PRESS./PRESS. DE GONFL. A FROID 413.7 KPA (60 PSI)
THIS VEHICLE CONFORMS TO ALL APPLICABLE U.S. FEDERAL MOTOR VEHICLE SAFETY STANDARDS IN EFFECT ON THE DATE OF MANUFACTURE
CE VEHICULE EST CONFORME A TOUTES LES NORMES QUI LUI SONT APPLICABLES EN VERTU DU REGLEMENT SUR LA SECURITE
I.N.: 7PKBE1423P1004240 TYPE: TRA/REM MODEL: 7X

Entrepreneur





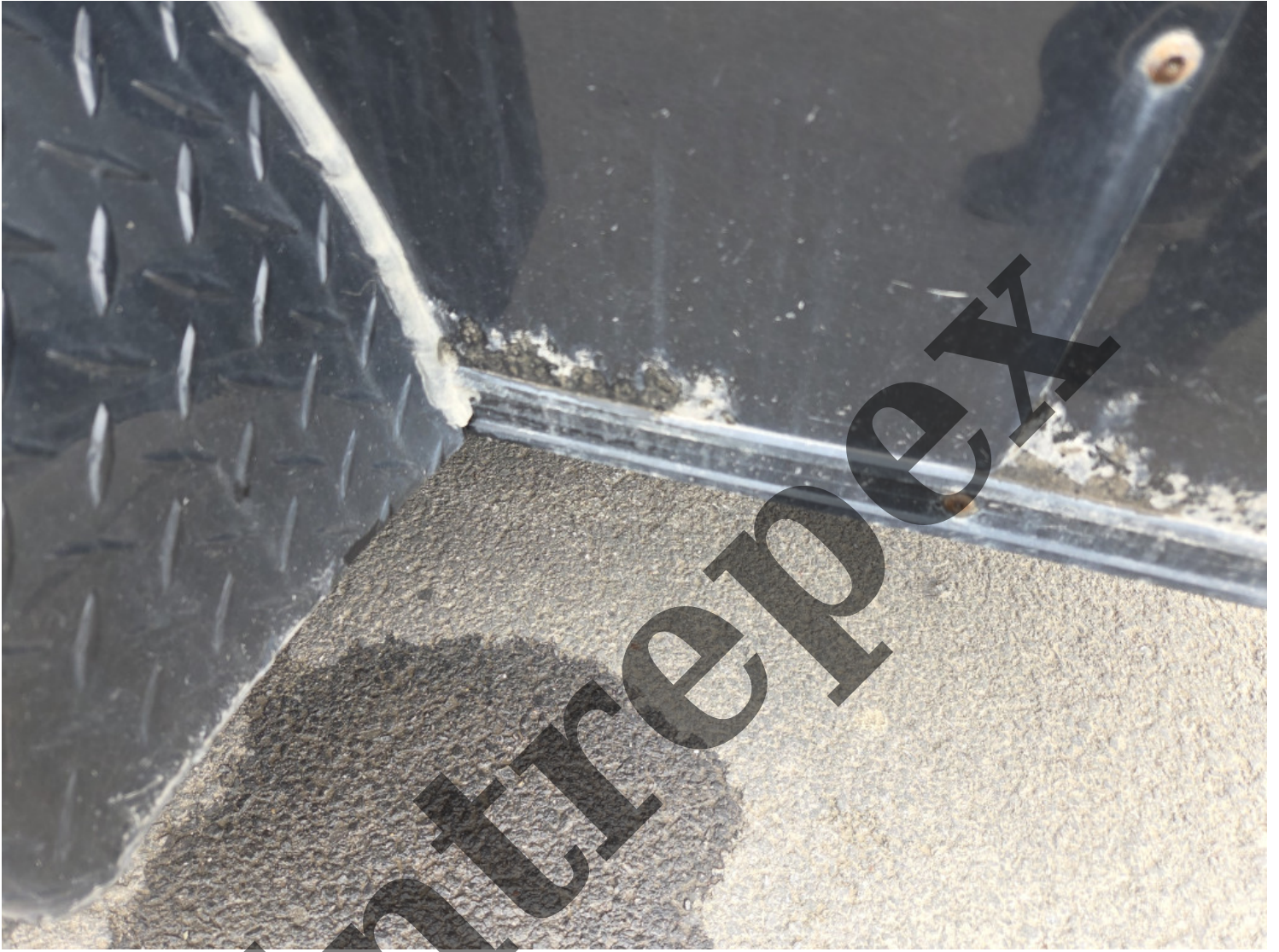








ETWOPEX



20260602_093416.jpg









20260602_093441.jpg



20260602_093444.jpg



20260602_093445.jpg



20260602_093448.jpg



20260602_093450.jpg







20260602_093511.jpg









20260602_093531.jpg













20260602_093607.jpg



20260602_093615.jpg

