

IMG_0663.jpeg



IMG_0662.jpeg



IMG_0664.jpeg



IMG_0665.jpeg



IMG_0666.jpeg



IMG_0667.jpeg





IMG_0669.jpeg



IMG_0670.jpeg



IMG_0671.jpeg



IMG_0672.jpeg



IMG_0673.jpeg



IMG_0674.jpeg



IMG_0675.jpeg



IMG_0676.jpeg





IMG_0648.jpeg



IMG_0649.jpeg



IMG_0650.jpeg



IMG_0651.jpeg



IMG_0652.jpeg



IMG_0653.jpeg



IMG_0654.jpeg



IMG_0655.jpeg



IMG_0657.jpeg



IMG_0658.jpeg



IMG_0659.jpeg



IMG_0660.jpeg



IMG_0661.jpeg



FotoSku

IMG_0680.jpeg



IMG_0683.jpeg



IMG_0684.jpeg



IMG_0685.jpeg



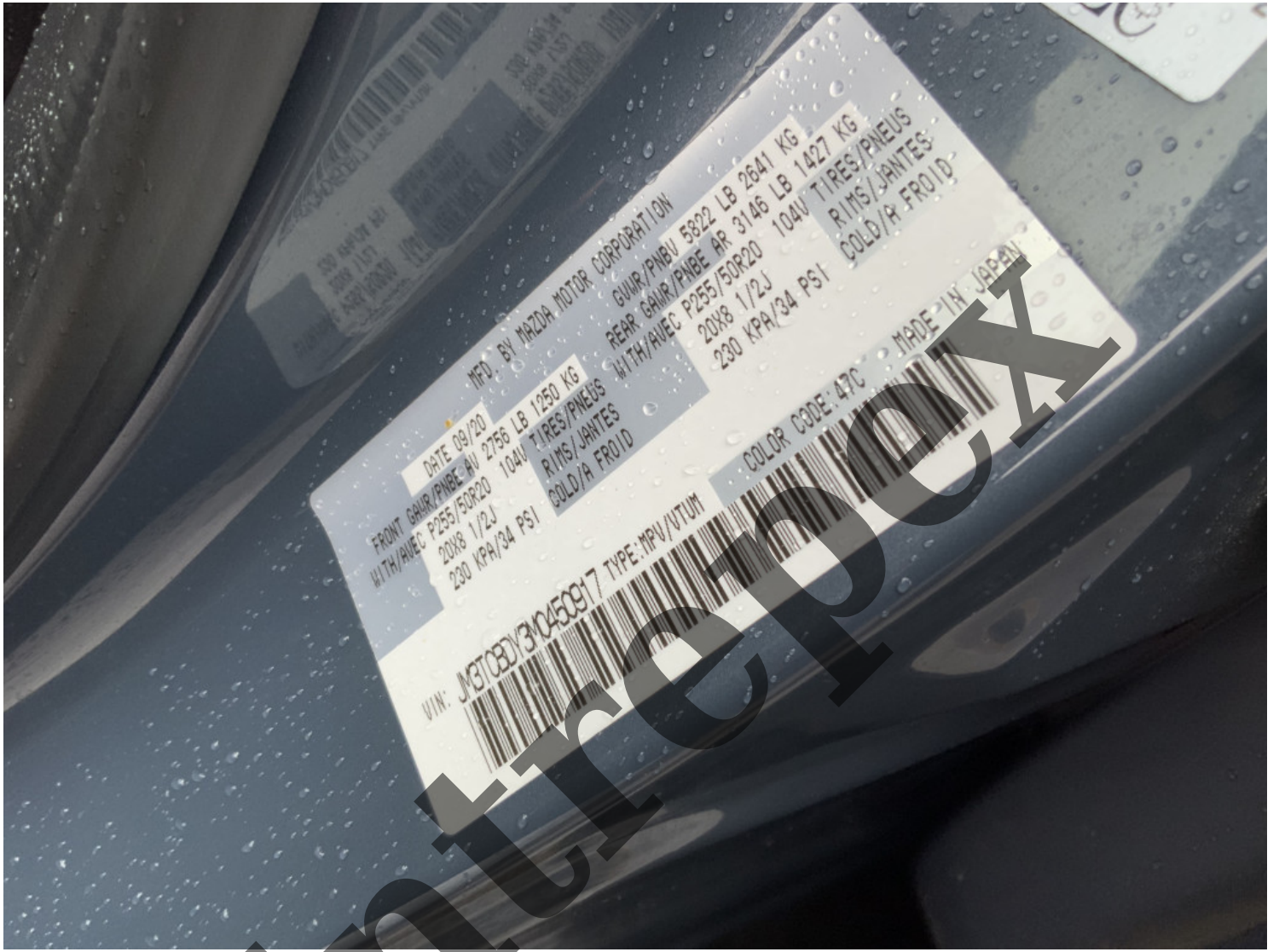
IMG_0686.jpeg



IMG_0687.jpeg







DATE 09/20
FRONT GAWR/PNBE AV 2756 LB 1250 KG
WITH/AJEC P255/50R20 104W TIRES/PNEUS
20X8 1/2J RIMS/JANTES
230 KPA/34 PSI COLD/A FROID

MFD. BY MAZDA MOTOR CORPORATION

GAWR/PNBU 5822 LB 2641 KG
REAR GAWR/PNBE AR 3146 LB 1427 KG
WITH/AJEC P255/50R20 104W TIRES/PNEUS
20X8 1/2J RIMS/JANTES
230 KPA/34 PSI COLD/A FROID

VIN: JM3TC3DY310450917 TYPE: MPV/UTUM

COLOR CODE: 47C MADE IN JAPAN

IMG_0676.jpeg



IMG_0689.jpeg





IMG_0645.jpeg



IMG_0646.jpeg



IMG_0647.jpeg

