

20260511_090952.jpg



20260511_090956.jpg



20260511_090959.jpg



20260511_091003.jpg



Entrepreneur

20260511_091006.jpg



20260511_091012.jpg



20260511_091009.jpg



20260511_091016.jpg





20260511_091029.jpg



20260511_091032.jpg



20260511_091036.jpg



20260511_091039.jpg



20260511_091041.jpg



20260511_091044.jpg

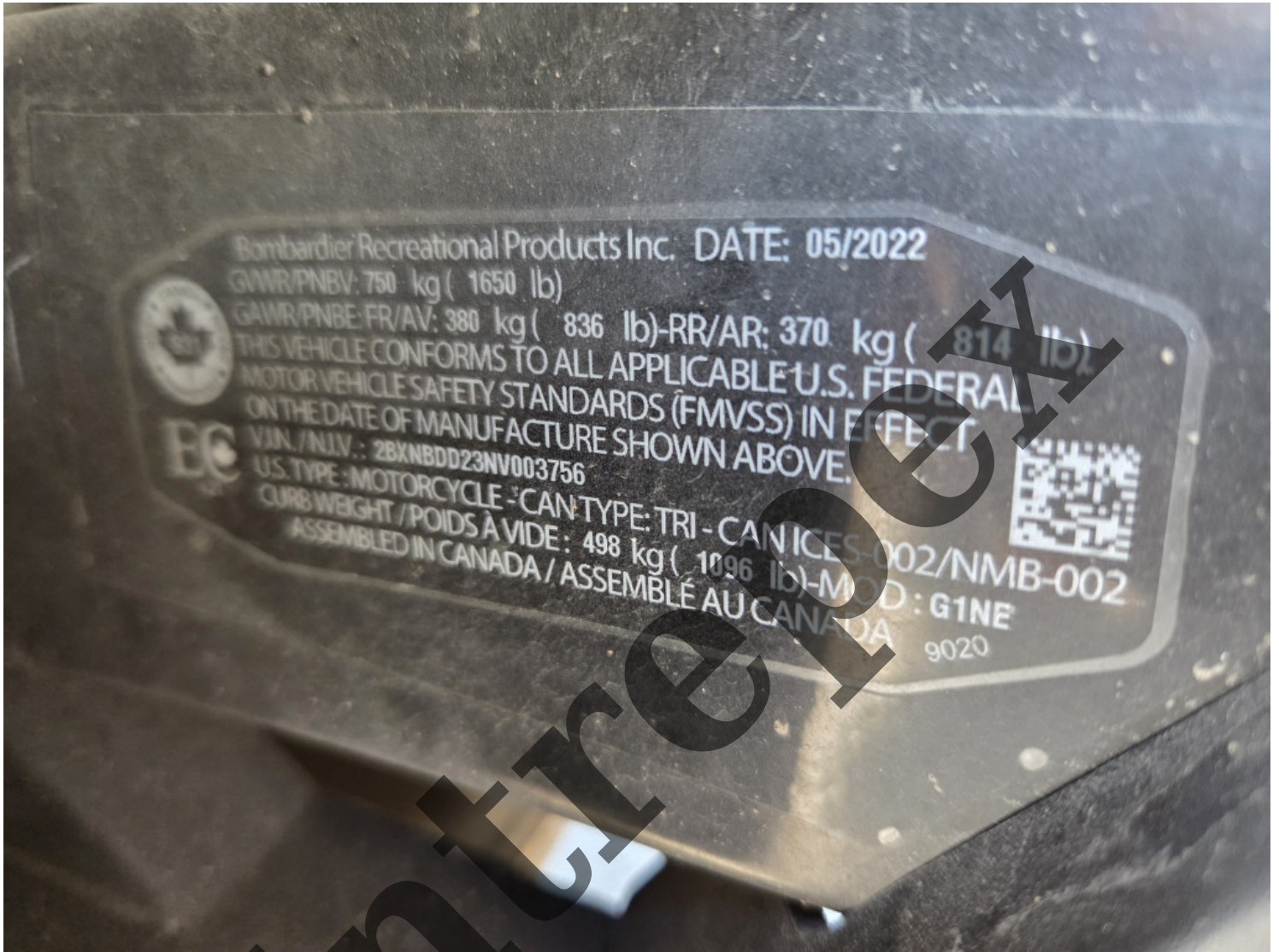




20260511_091059.jpg



Entrepreneur



Bombardier Recreational Products Inc. DATE: 05/2022

GWR/PNBV: 750 kg (1650 lb)

GAWR/PNBE-FR/AV: 380 kg (836 lb)-RR/AR: 370 kg (814 lb)

THIS VEHICLE CONFORMS TO ALL APPLICABLE U.S. FEDERAL MOTOR VEHICLE SAFETY STANDARDS (FMVSS) IN EFFECT ON THE DATE OF MANUFACTURE SHOWN ABOVE.

VIN / N.I.V. : 2BXNBDD23NV003756

U.S. TYPE : MOTORCYCLE - CAN TYPE: TRI - CAN ICES-002/NMB-002

CURB WEIGHT / POIDS À VIDE : 498 kg (1096 lb)-MOD : G1NE
ASSEMBLED IN CANADA / ASSEMBLÉ AU CANADA 9020



Entrepreneur



20260511_091156.jpg





20260511_091201.jpg



20260511_091209.jpg





