

IMG_0208.jpeg



IMG_0207.jpeg



IMG_0209.jpeg



IMG_0210.jpeg



IMG_0211.jpeg



IMG_0213.jpeg



IMG_0212.jpeg



IMG_0214.jpeg



IMG_0215.jpeg



IMG_0216.jpeg



IMG_0217.jpeg



IMG_0218.jpeg









IMG_0193.jpeg



IMG_0194.jpeg



IMG_0195.jpeg



IMG_0196.jpeg



IMG_0197.jpeg



IMG_0198.jpeg



IMG_0199.jpeg



IMG_0200.jpeg



IMG_0201.jpeg



IMG_0202.jpeg



IMG_0204.jpeg



IMG_0205.jpeg



IMG_0206.jpeg



IMG_0224.jpeg



IMG_0227.jpeg



IMG_0228.jpeg





IMG_0230.jpeg



IMG_0231.jpeg



IMG_0232.jpeg



IMG_0233.jpeg



IMG_0234.jpeg



IMG_0235.jpeg





MANUFACTURED BY NISSAN MOTOR CO., LTD.

DATE: 10/16 GVWR/PNBV: 1840 KG

GAWR/PNBE FR: 1006 KG RR: 860 KG

VIN: 3N1CB7AP5HY213106

TYPE: PC/VT

CAN ICES-2/NMB-2

COLOR TRIM TRANS

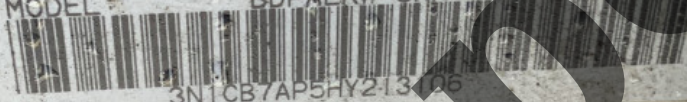
KAD: G REOF10D

AXLE ENGINE

GS56 MR16DDT 1618CC

MODEL: BDPALRW-UNA

47000



3N1CB7AP5HY213106

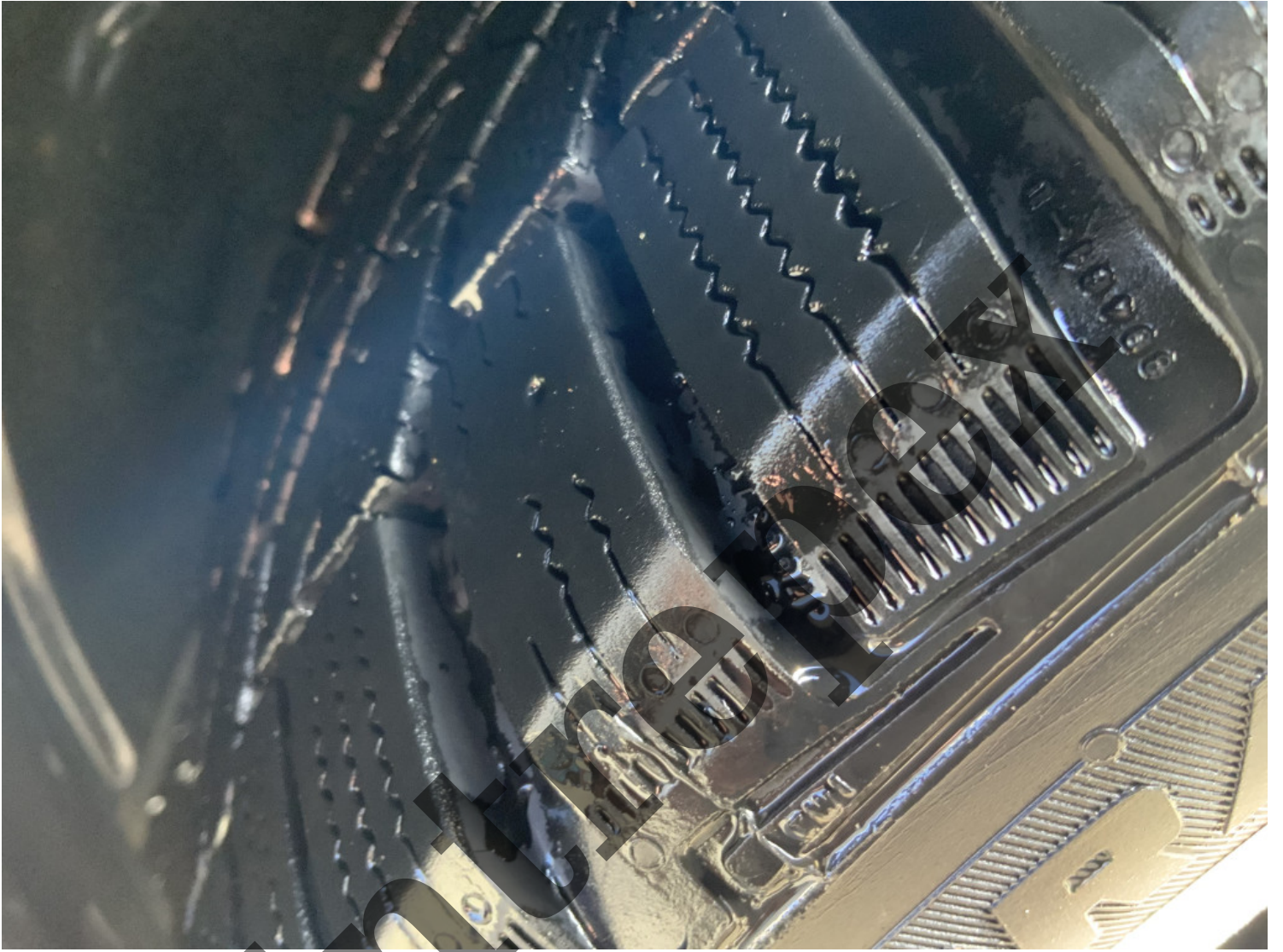
Entrepreneur



IMG_0236.jpeg



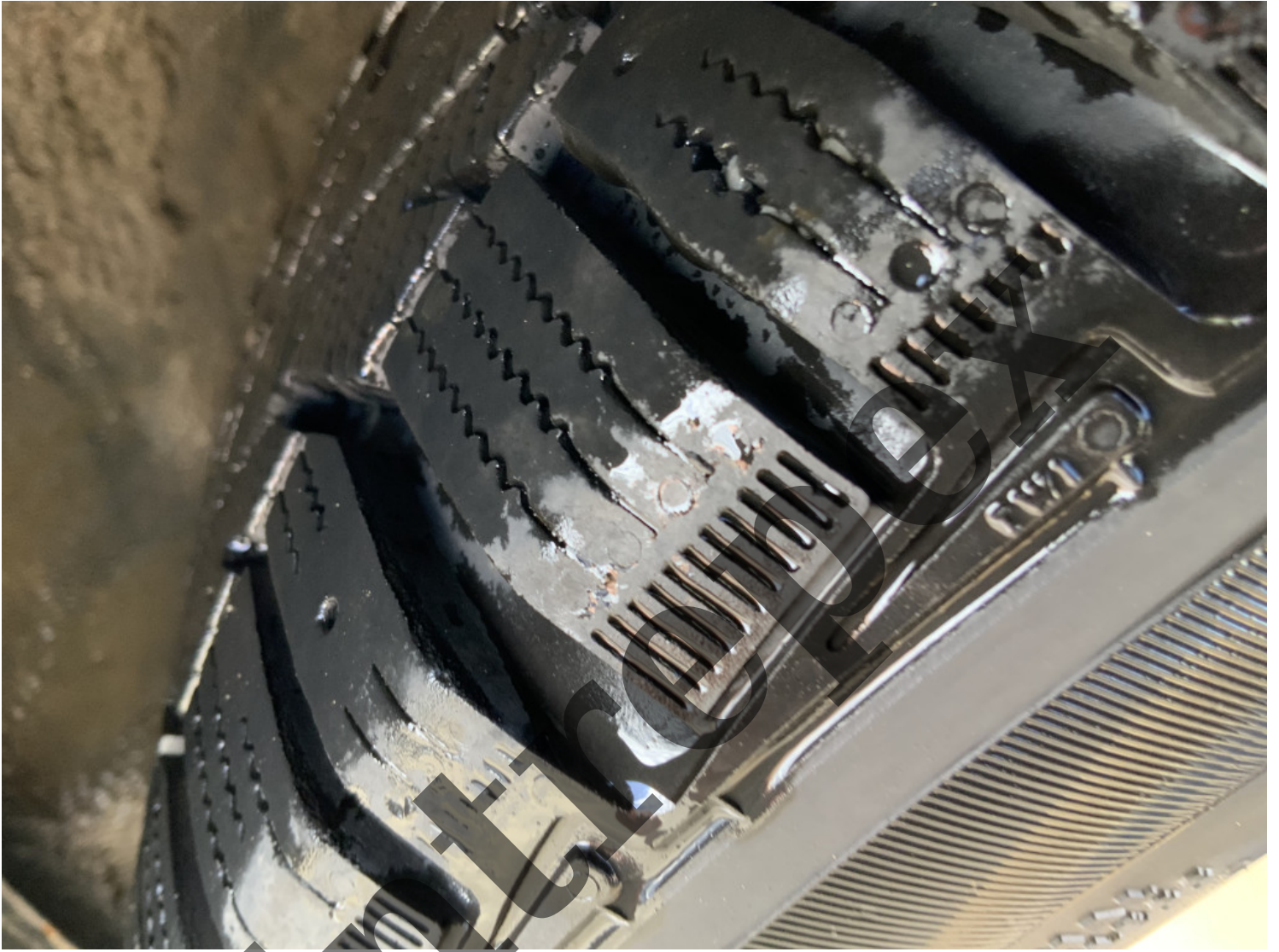
IMG_0189.jpeg



IMG_0190.jpeg



IMG_0191.jpeg



IMG_0192.jpeg

