

IMG\_0087.jpeg



IMG\_0085.jpeg



IMG\_0088.jpeg



IMG\_0089.jpeg



IMG\_0090.jpeg



IMG\_0091.jpeg



IMG\_0092.jpeg



IMG\_0093.jpeg



IMG\_0094.jpeg





IMG\_0096.jpeg



IMG\_0097.jpeg



IMG\_0098.jpeg



IMG\_0072.jpeg



IMG\_0073.jpeg



ELITE

IMG\_0074.jpeg



IMG\_0075.jpeg



IMG\_0076.jpeg



IMG\_0077.jpeg



IMG\_0078.jpeg



IMG\_0079.jpeg



IMG\_0080.jpeg



IMG\_0081.jpeg



IMG\_0082.jpeg



IMG\_0083.jpeg



IMG\_0084.jpeg



IMG\_0102.jpeg



IMG\_0109.jpeg



IMG\_0110.jpeg



IMG\_0111.jpeg



IMG\_0112.jpeg





MFD. BY MITSUBISHI MOTORS CORPORATION, JAPAN  
MAY 2024

GWR/PNBV	2750KG		
GWR/PNBE	FR/AVT 1385KG	WITH/AVEC	
P235/60R18	TIRES/PNEUS	18X7.5J	RIMS/JANTES
GWR/PNBE	RR/ARR 1495KG	WITH/AVEC	
P235/60R18	TIRES/PNEUS	18X7.5J	RIMS/JANTES

CAN ICES-2/NMB-2



TYPE: MPV/VTUM

Future

IMG\_0098.jpeg

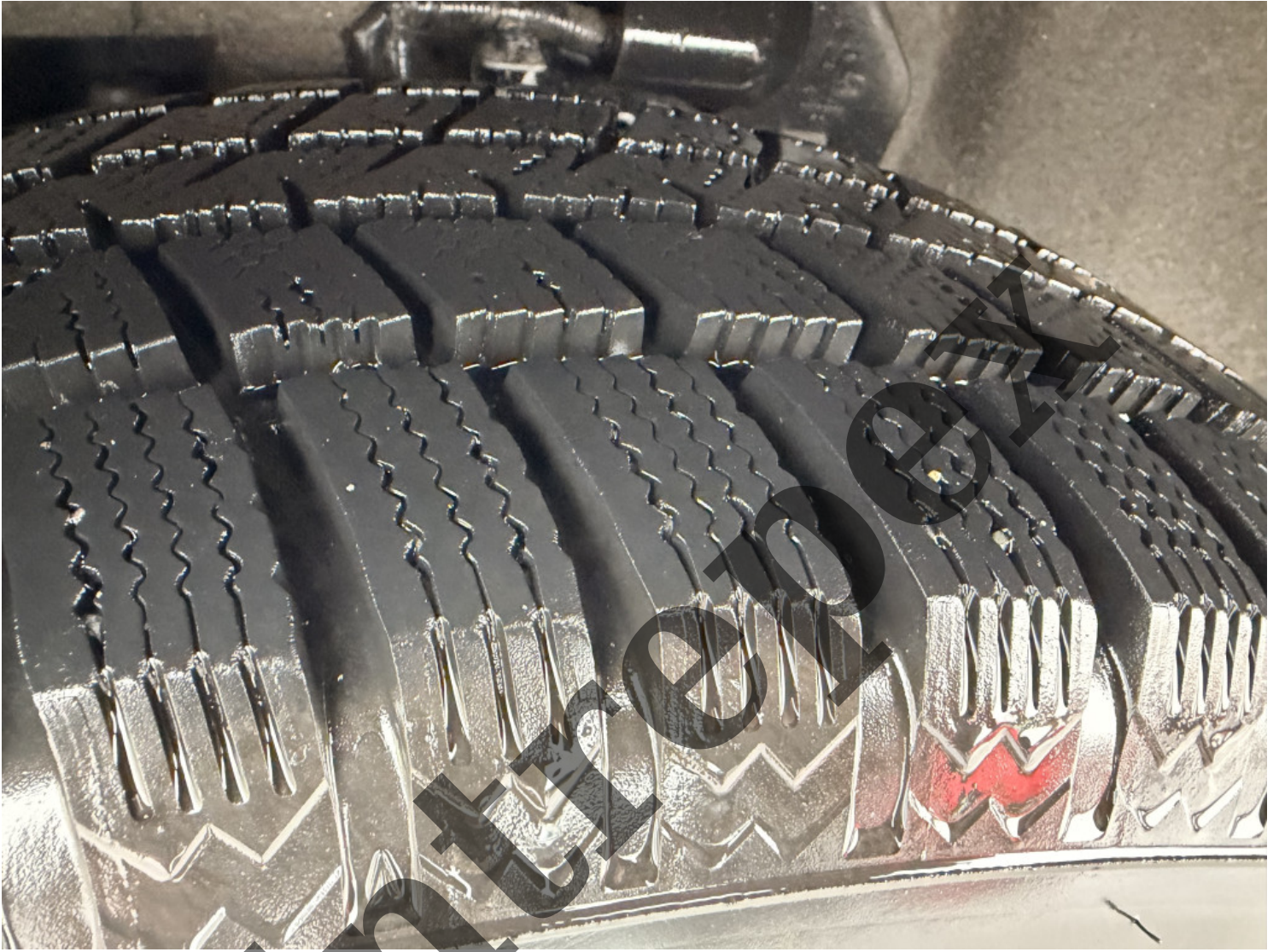




IMG\_0106.jpeg



IMG\_0107.jpeg



IMG\_0108.jpeg

