

IMG_6800.jpeg



IMG_6801.jpeg



IMG_6806.jpeg



IMG_6805.jpeg



IMG_6804.jpeg



IMG_6803.jpeg



IMG_6802.jpeg



IMG_6811.jpeg



IMG_6810.jpeg



IMG_6809.jpeg



ENT

IMG_6808.jpeg



IMG_6807.jpeg



IMG_6816.jpeg



IMG_6815.jpeg



IMG_6814.jpeg





MANUFACTURED BY/FABRIQUÉ PAR : CAM SUPERLINE, INC

DATE : 05/2014

GWR/PNBV: 7300 KG (16100 LB)

COLD INFL. PRESS. / PRESS.

DE GONFL. À FROID

KPA (PSI / LPC)

SGL/DUAL

GAWR/PNBE (EACH AXLE)

TIRE / PNEU

RIM / JANTE

3180 KG (7000 LB)

ST235/80R16 (E)

16 X 6 K

552 KPA (80 PSI)

SINGLE

THIS VEHICLE CONFORMS TO ALL APPLICABLE STANDARDS PRESCRIBED UNDER THE CANADIAN MOTOR VEHICLE SAFETY REGULATIONS IN EFFECT ON THE DATE OF MANUFACTURE. / CE VÉHICULE EST CONFORME À TOUTES LES NORMES QUI LUI SONT APPLICABLES EN VERTU DU RÈGLEMENT SUR LA SÉCURITÉ DES VÉHICULES AUTOMOBILES DU CANADA EN VIGUEUR À LA DATE DE SA FABRICATION

THIS VEHICLE CONFORMS TO ALL APPLICABLE U.S. FEDERAL MOTOR VEHICLE SAFETY STANDARDS IN EFFECT ON THE DATE OF MANUFACTURE SHOWN ABOVE

V.I.N./N.I.V.

5JPBU1822EP036057

TYPE : TRA/REM TCAM614L PHD

LS-MT



IMG_6821.jpeg



IMG_6820.jpeg



IMG_6819.jpeg



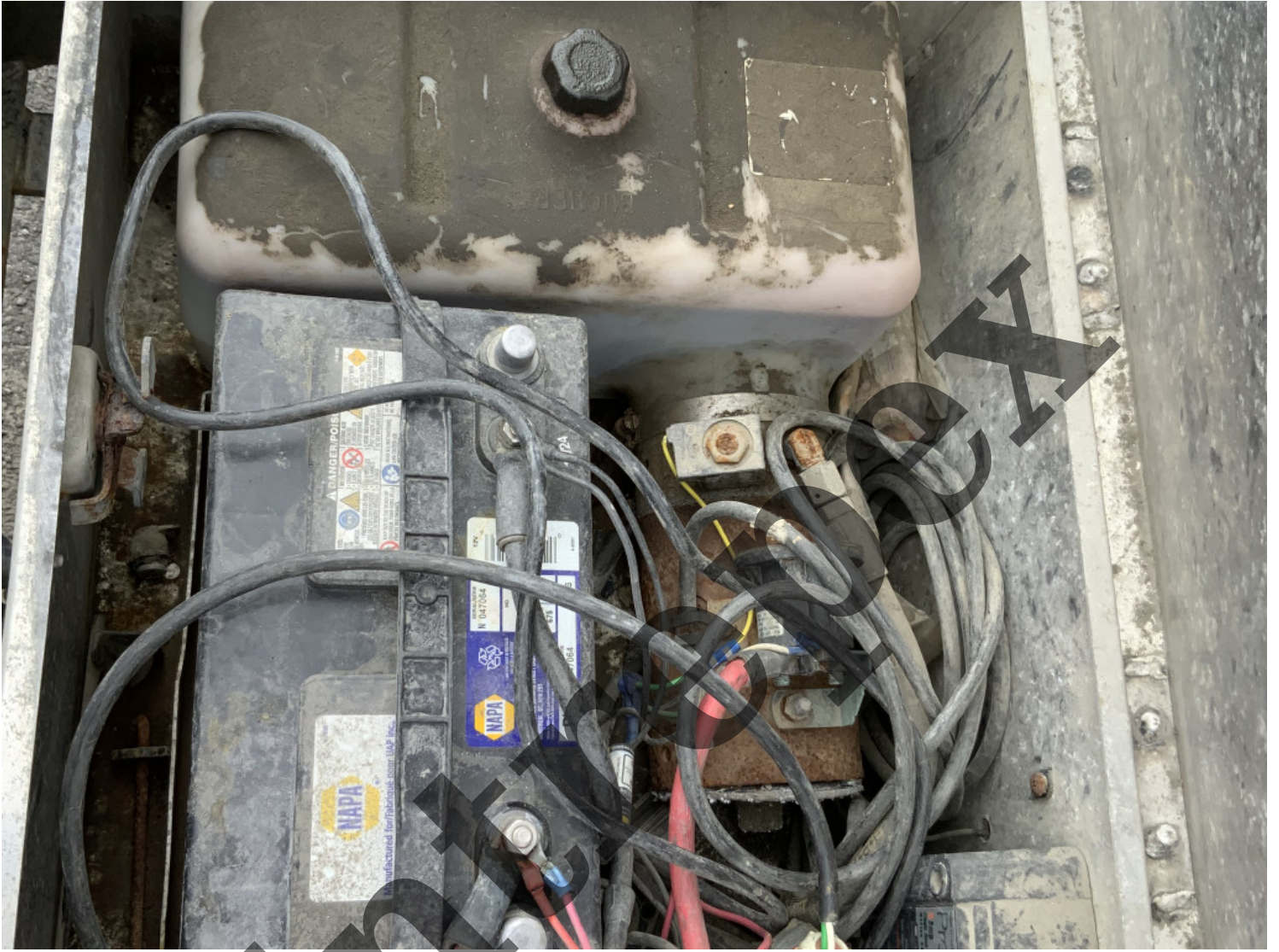
IMG_6818.jpeg



IMG_6817.jpeg



IMG_6823.jpeg



IMG_6824.jpeg



IMG_6825.jpeg



IMG_6826.jpeg



IMG_6827.jpeg





IMG_6829.jpeg



IMG_6830.jpeg



IMG_6831.jpeg



IMG_6832.jpeg



IMG_6833.jpeg



IMG_6834.jpeg



IMG_6835.jpeg



IMG_6836.jpeg



IMG_6837.jpeg



IMG_6838.jpeg



IMG_6840.jpeg



IMG_6839.jpeg

