

IMG_3455.jpeg



IMG_3458.jpeg



IMG_3457.jpeg



IMG_3456.jpeg



IMG_3459.jpeg



IMG_3462.jpeg



IMG_3461.jpeg



IMG_3460.jpeg



IMG_3465.jpeg



IMG_3464.jpeg



IMG_3463.jpeg



EM

IMG_3468.jpeg



ENTRANCE

IMG_3467.jpeg



ET

IMG_3466.jpeg



IMG_3471.jpeg



IMG_3470.jpeg



IMG_3469.jpeg



IMG_3474.jpeg



IMG_3473.jpeg



IMG_3472.jpeg



IMG_3477.jpeg



IMG_3476.jpeg



IMG_3475.jpeg



IMG_3480.jpeg



IMG_3479.jpeg



IMG_3478.jpeg



IMG_3483.jpeg



IMG_3482.jpeg



IMG_3481.jpeg



IMG_3484.jpeg



IMG_3485.jpeg



IMG_3486.jpeg



ELI

IMG_3487.jpeg





XYZ Automation Inc.
5 Medicorum Place
Waterdown, Ontario L8B 0Y2
CANADA
Ph. +1 (905) 634-4940
www.axyz.com

Type: WOODWorker
Model: 4010
Serial: 9000-0173
Mfg. Date: 2025-03-03
U_o: 240 V
I_n: 24.1 A I_a: 150 A
Dwg: 9000-0173 rev. 1

Pressure: 5.5-8.3 Bar
80-120 PSIG

Filt: 5 μ m
Dry: -20 °C
Ph: 3 PH
F: 50/60 Hz
I_{pk}: 5 kA

Entrepreneur

IMG_3489.jpeg





IMG_3491.jpeg



IMG_3492.jpeg

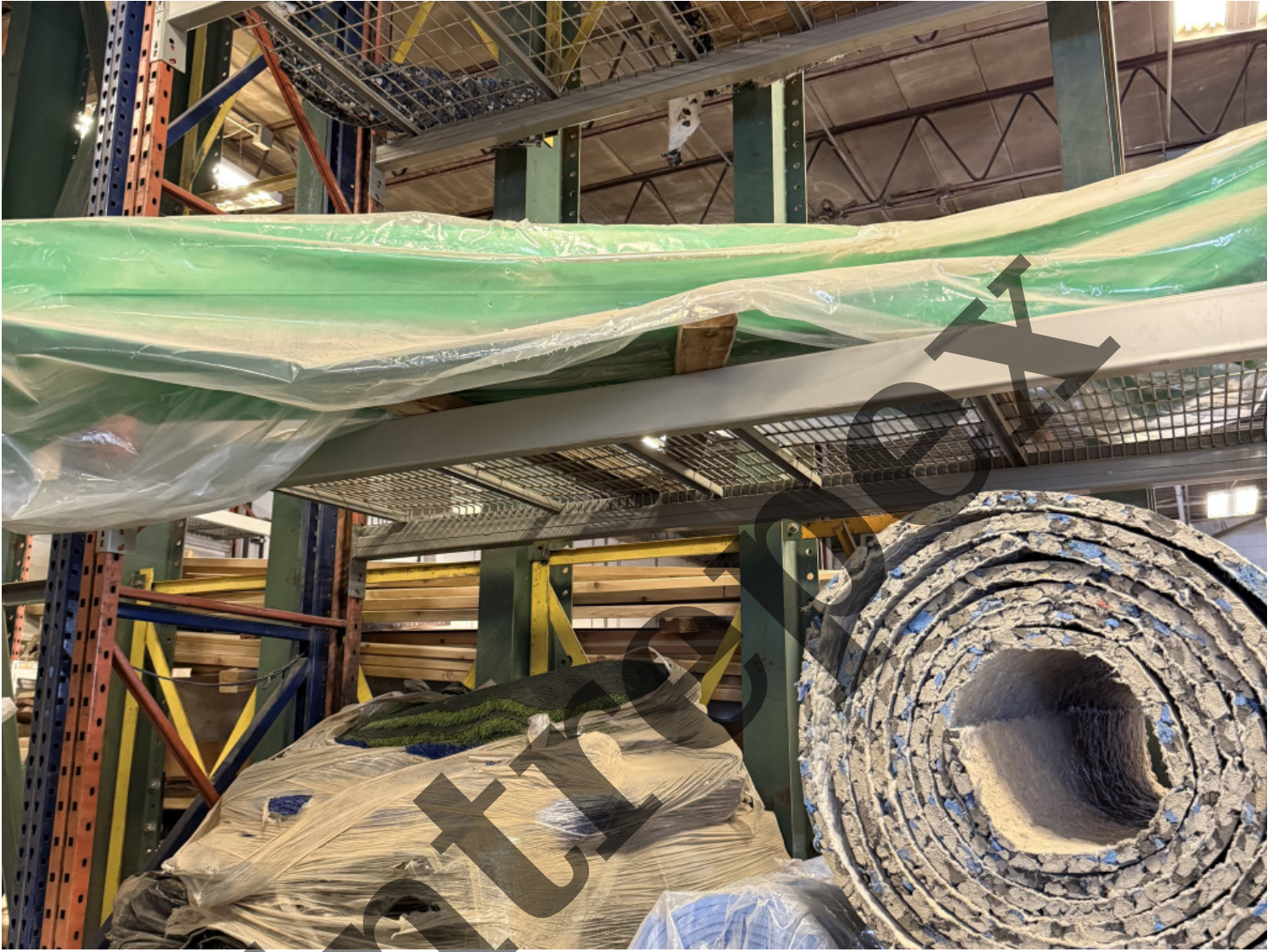


Entreprex

IMG_3493.jpeg



IMG_3496.jpeg



IMG_3495.jpeg



IMG_3494.jpeg



IMG_3499.jpeg



IMG_3498.jpeg



IMG_3497.jpeg



IMG_3502.jpeg



IMG_3501.jpeg





IMG_3505.jpeg



IMG_3504.jpeg



IMG_3503.jpeg



IMG_3508.jpeg



ET

IMG_3507.jpeg



IMG_3506.jpeg



IMG_3511.jpeg



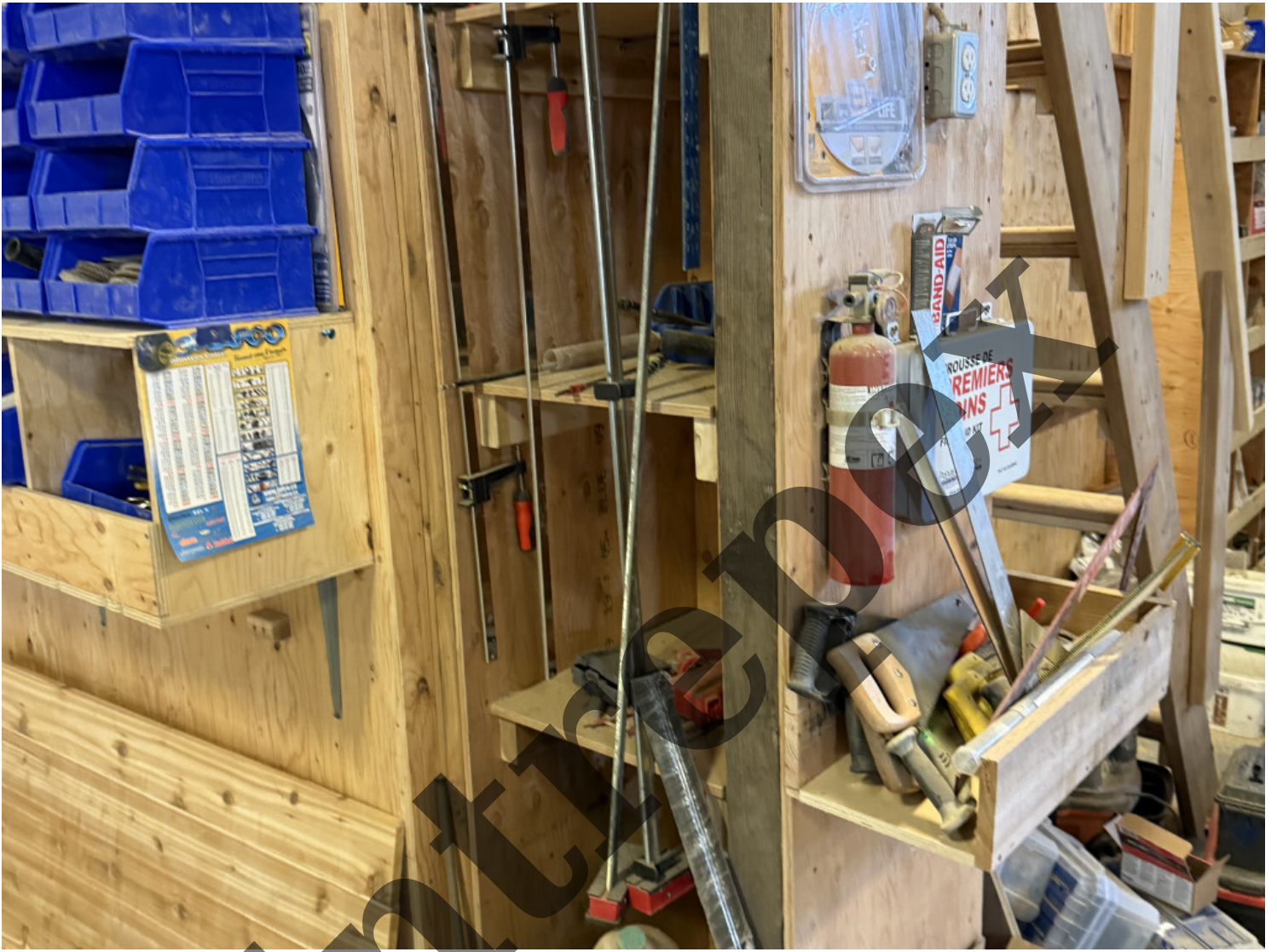
IMG_3510.jpeg



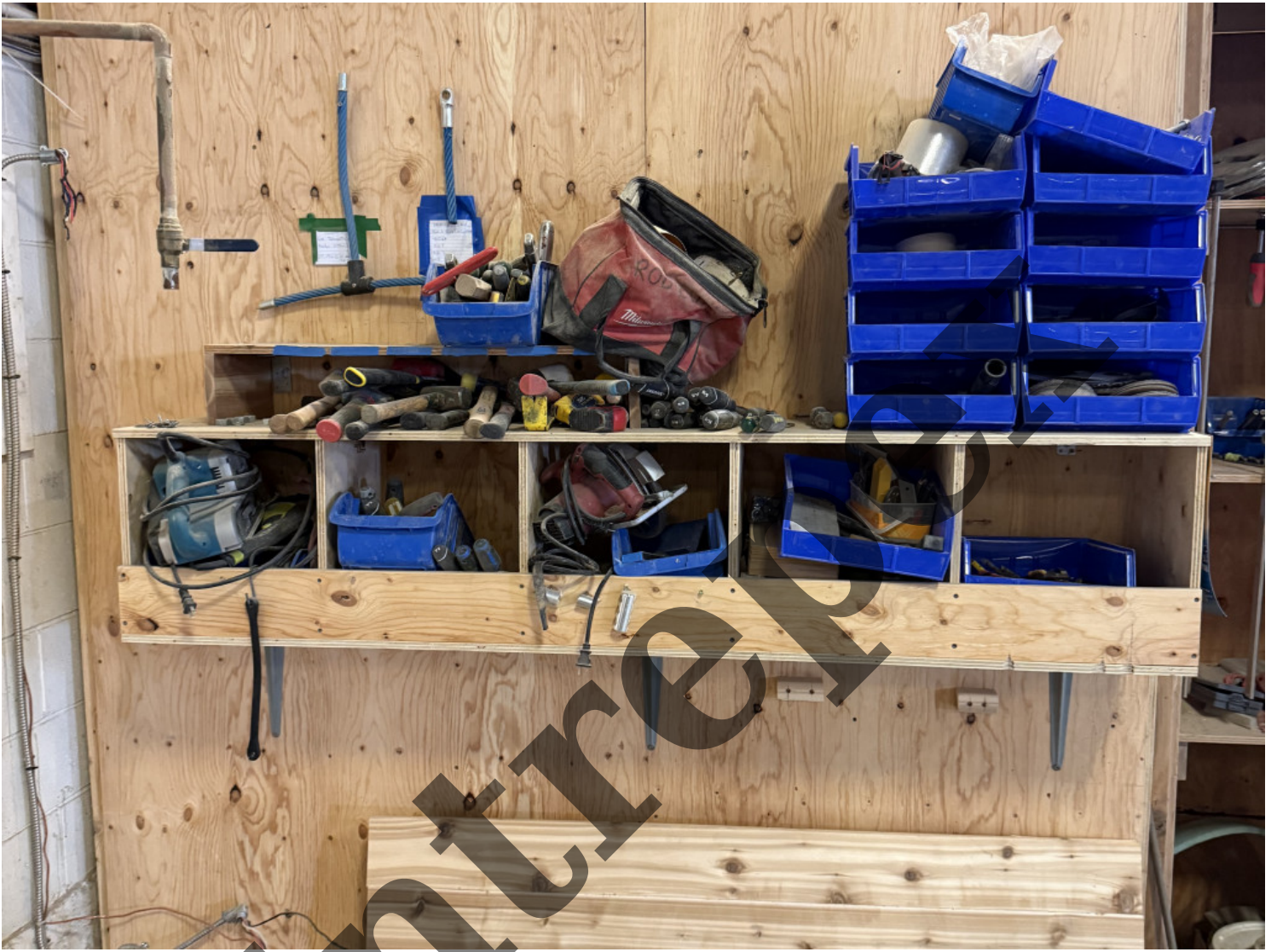
IMG_3509.jpeg



IMG_3514.jpeg



IMG_3513.jpeg



IMG_3512.jpeg



IMG_3517.jpeg



ENR

IMG_3516.jpeg



IMG_3515.jpeg



IMG_3518.jpeg



IMG_3521.jpeg



IMG_3520.jpeg





IMG_3522.jpeg



IMG_3525.jpeg



IMG_3524.jpeg



IMG_3523.jpeg



IMG_3528.jpeg



IMG_3527.jpeg



IMG_3526.jpeg

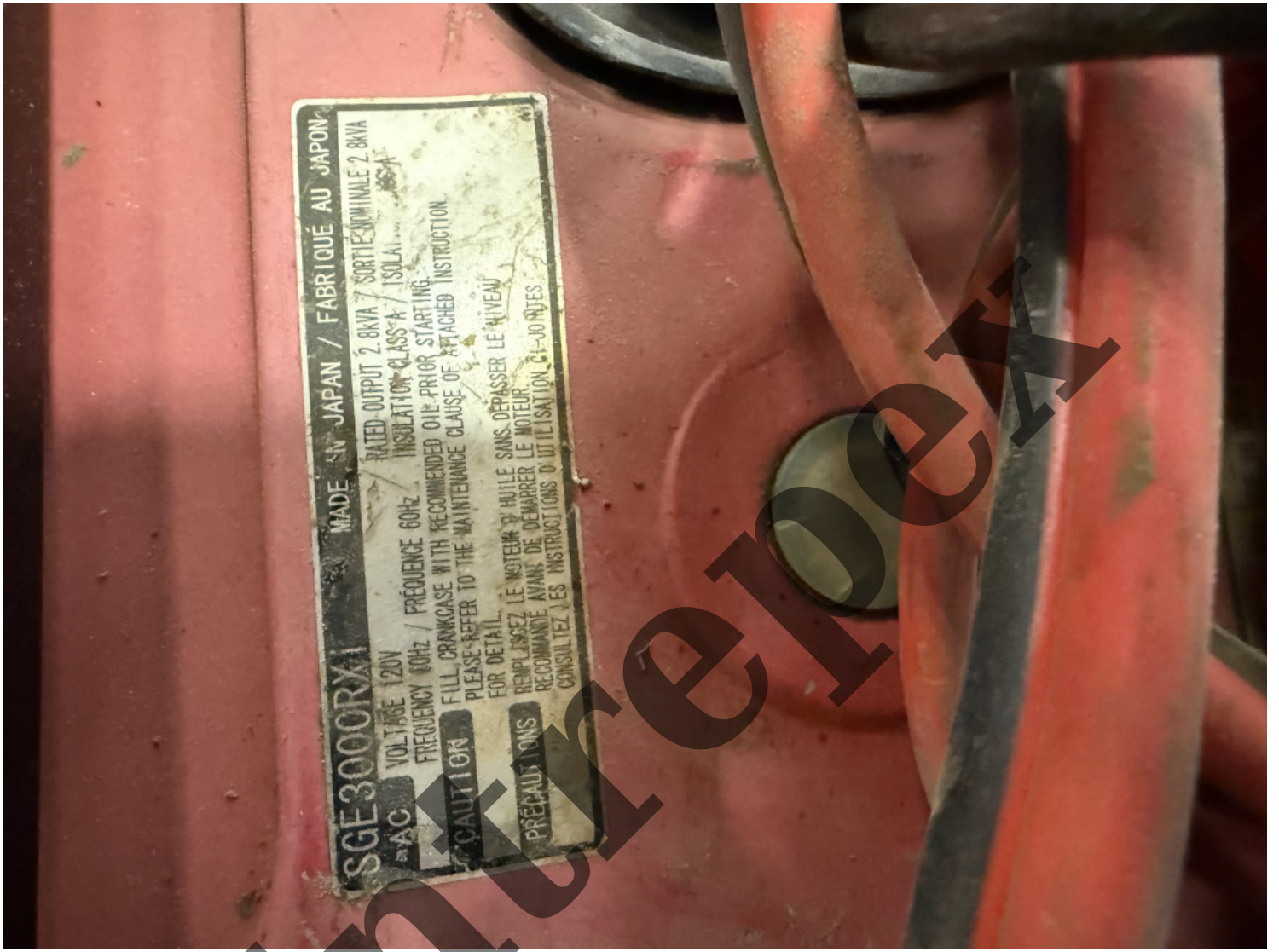


IMG_3531.jpeg



IMG_3530.jpeg





SGE3000RA
AC
VOLTAGE 120V
FREQUENCY 60Hz / FRÉQUENCE 60Hz
FILL CRANKCASE WITH RECOMMENDED OIL PRIOR STARTING.
PLEASE REFER TO THE MAINTENANCE CLAUSE OF ATTACHED INSTRUCTION FOR DETAIL.
REPLISSEZ LE MOTEUR D'HUILE SANS DÉPASSER LE NIVEAU RECOMMANDÉ AVANT DE DÉMARRER LE MOTEUR.
CONSULTEZ LES INSTRUCTIONS D'UTILISATION C-1-JOURNÉES

MADE IN JAPAN / FABRIQUÉ AU JAPON
RATED OUTPUT 2.8kVA / SORTIE NOMINALE 2.8kVA
INSULATION CLASS 'A' / ISOLATION CLASS 'A'

CAUTION
PRECAUTIONS

IMG_3534.jpeg



IMG_3533.jpeg



IMG_3532.jpeg



IMG_3537.jpeg



IMG_3536.jpeg



IMG_3535.jpeg



IMG_3540.jpeg



IMG_3539.jpeg



IMG_3538.jpeg



IMG_3543.jpeg



IMG_3542.jpeg



IMG_3541.jpeg



IMG_3546.jpeg



IMG_3545.jpeg



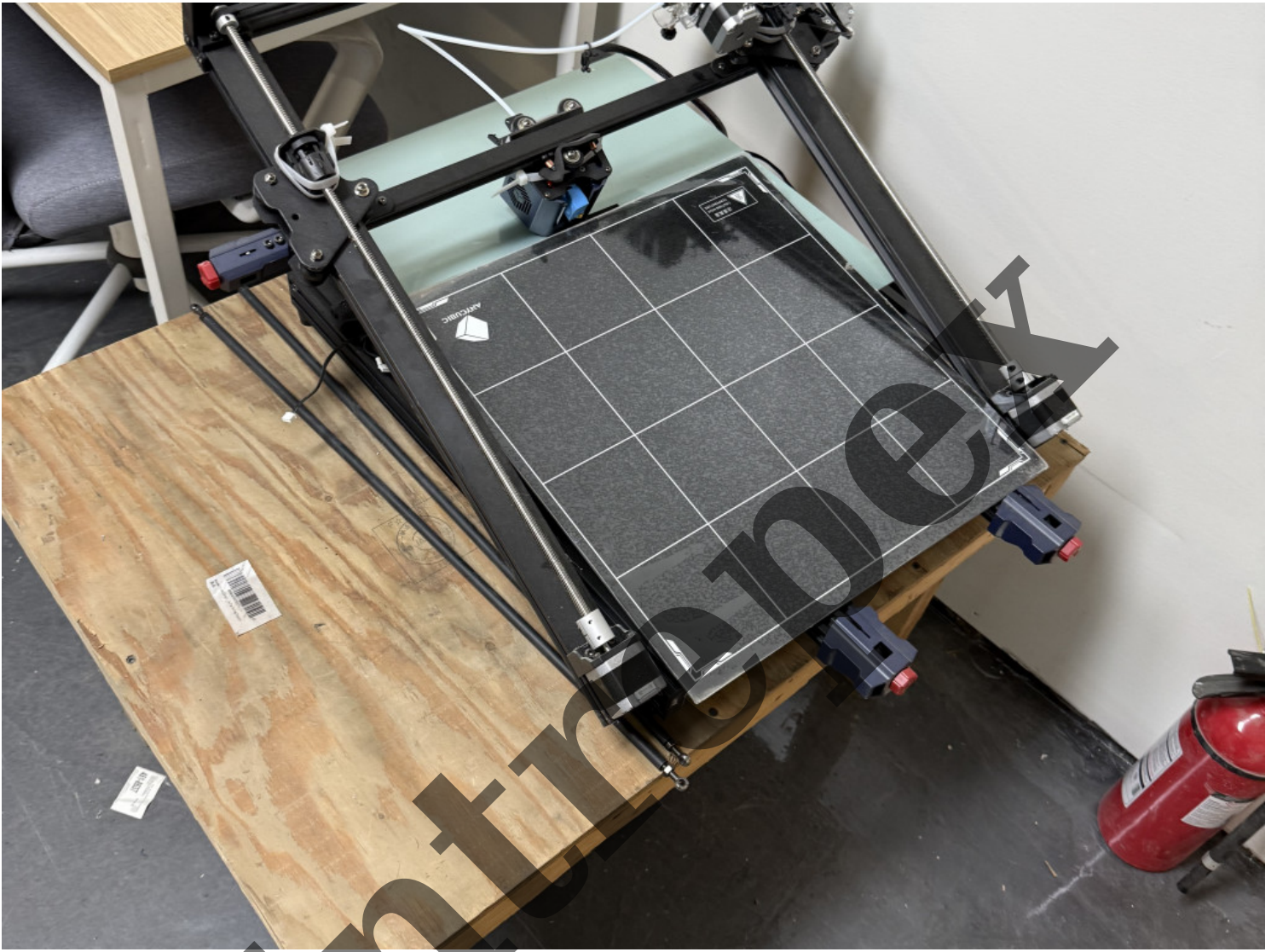
IMG_3544.jpeg



IMG_3549.jpeg



IMG_3548.jpeg



TOP MOUNT - FROST-PROOF • REFRIGERATOR-FREEZER
COMPARTIMENTS SUPERPOSÉS - ANTI-GIVRE •
RÉFRIGÉRATEUR-CONGÉLATEUR

Cabinet Dimensions
Dimensions extérieures

Height	65 7/8 inches
Hauteur	166,1 cm (65 7/8 po)
Width	29 7/8 inches
Largeur	75,3 cm (29 7/8 po)
Depth without handles	29 7/8 inches
Profondeur sans poignées	75,8 cm (29 7/8 po)
Approx. Shipping Weight	.205 lbs
Poids brut approximatif	.93 kg (205 lb)

Volume specifications
Spécifications du volume

Total	18.3 Cu Ft
Total	.518 L (18,3 pi³)
Fresh Food	14.27 Cu Ft
Réfrigérateur	.404 L (14,27 pi³)
Freezer	4.07 Cu Ft
Congélateur	.115 L (4,07 pi³)

Features
Caractéristiques

- SpillSafe™ Shelving
- Clayettes SpillSafe™
- Gallon door Storage pour contenants d'un gallon
- Dairy Storage
- Casier laitier
- Deli Drawer
- Bac à charcuterie
- Twin Crispers
- Deux bacs à légumes

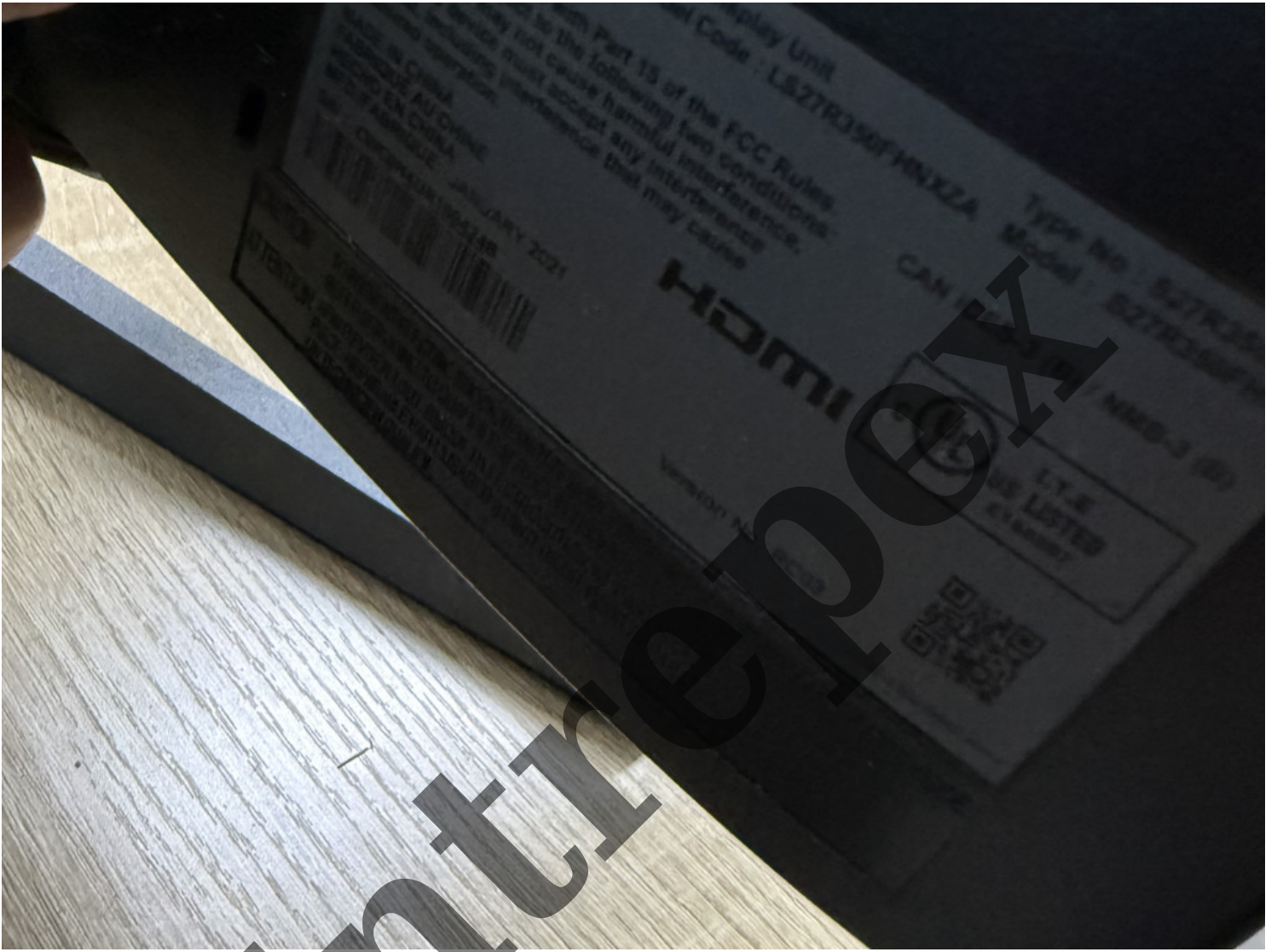
1-800-Frigidaire
www.frigidaire.com

Electrolux Home Products maintains a vast network of authorized services to provide prompt, courteous professional services for your appliance anywhere you live or move in the U.S.A.
Electrolux Home Products offre un vaste réseau de réparateurs autorisés pour vous servir de façon rapide, courtoise et professionnelle, peu importe où vous vivez ou déménagez aux États-Unis.

For the energy cost and efficiency information is available from your retailer.
Pour les données relatives des renseignements relatifs au coût d'utilisation et l'efficacité de votre appareil consultez votre détaillant.

 From the Electrolux Group. The world's No.1 choice.
ITCHER, CLEANING AND OUTDOOR APPLIANCES COMBINED

IMG_3550.jpeg



IMG_3551.jpeg





IMG_3553.jpeg



IMG_3552.jpeg



Entrepreneur





IMG_3557.jpeg



IMG_3556.jpeg



IMG_3559.jpeg



IMG_3562.jpeg





IMG_3560.jpeg



IMG_3565.jpeg







IMG_3568.jpeg



IMG_3567.jpeg





IMG_3571.jpeg



IMG_3570.jpeg





IMG_3574.jpeg



IMG_3573.jpeg



IMG_3572.jpeg



IMG_3577.jpeg



IMG_3576.jpeg



IMG_3575.jpeg



IMG_3580.jpeg



IMG_3579.jpeg



IMG_3578.jpeg



IMG_3551.jpeg



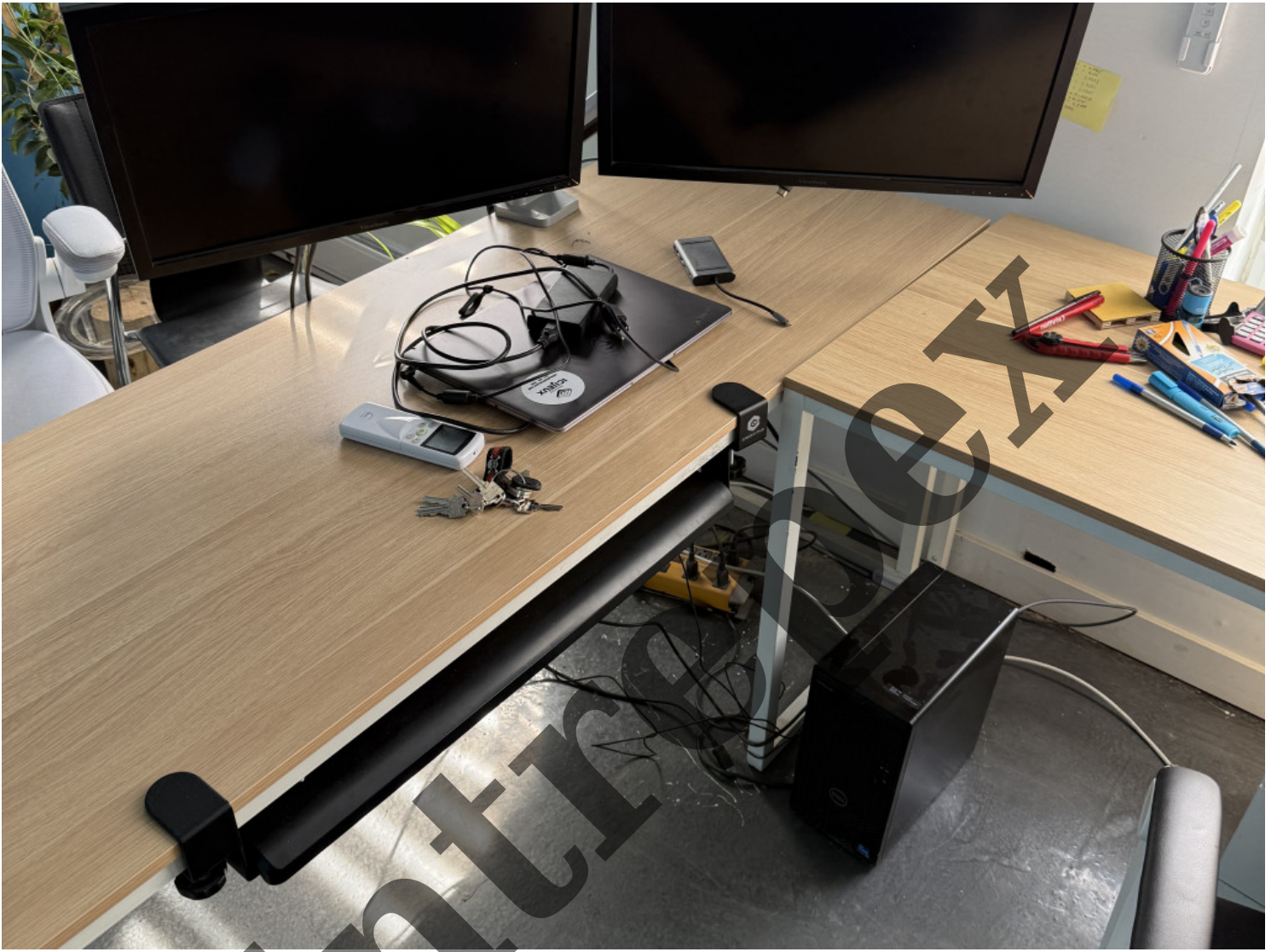


Entrepreneur





IMG_3553.jpeg





Entrepreneur

IMG_3557.jpeg



IMG_3556.jpeg





SKU: WS76 11UM-468US-BB91190H6dGXXDX10P1
S/N: K211N0181540

MFG: 2021/1/1

CHIKAPB

This device complies with the FCC Part 15 Class B digital device limits. Operation is subject to the condition that this device must not cause interference and must accept any interference that may be received.

MSI
FOR TECHNICAL SUPPORT, PLEASE VISIT OUR WEBSITE AT www.msi.com

IMG_3560.jpeg



IMG_3559.jpeg



IMG_3562.jpeg



IMG_3565.jpeg





Entrepreneur



IMG_3568.jpeg



IMG_3567.jpeg





IMG_3571.jpeg



IMG_3570.jpeg





IMG_3574.jpeg



IMG_3573.jpeg



IMG_3572.jpeg



IMG_3577.jpeg



IMG_3576.jpeg



IMG_3575.jpeg



IMG_3580.jpeg



IMG_3579.jpeg



IMG_3578.jpeg



IMG_3583.jpeg





IMG_3581.jpeg



IMG_3586.jpeg



IMG_3585.jpeg



IMG_3584.jpeg



IMG_3581.jpeg



IMG_3584.jpeg



IMG_3583.jpeg



IMG_3582.jpeg



IMG_3585.jpeg



IMG_3588.jpeg



IMG_3587.jpeg



IMG_3586.jpeg



IMG_3589.jpeg



IMG_3592.jpeg



IMG_3591.jpeg



IMG_3590.jpeg



IMG_3595.jpeg



IMG_3594.jpeg



IMG_3593.jpeg



IMG_3598.jpeg



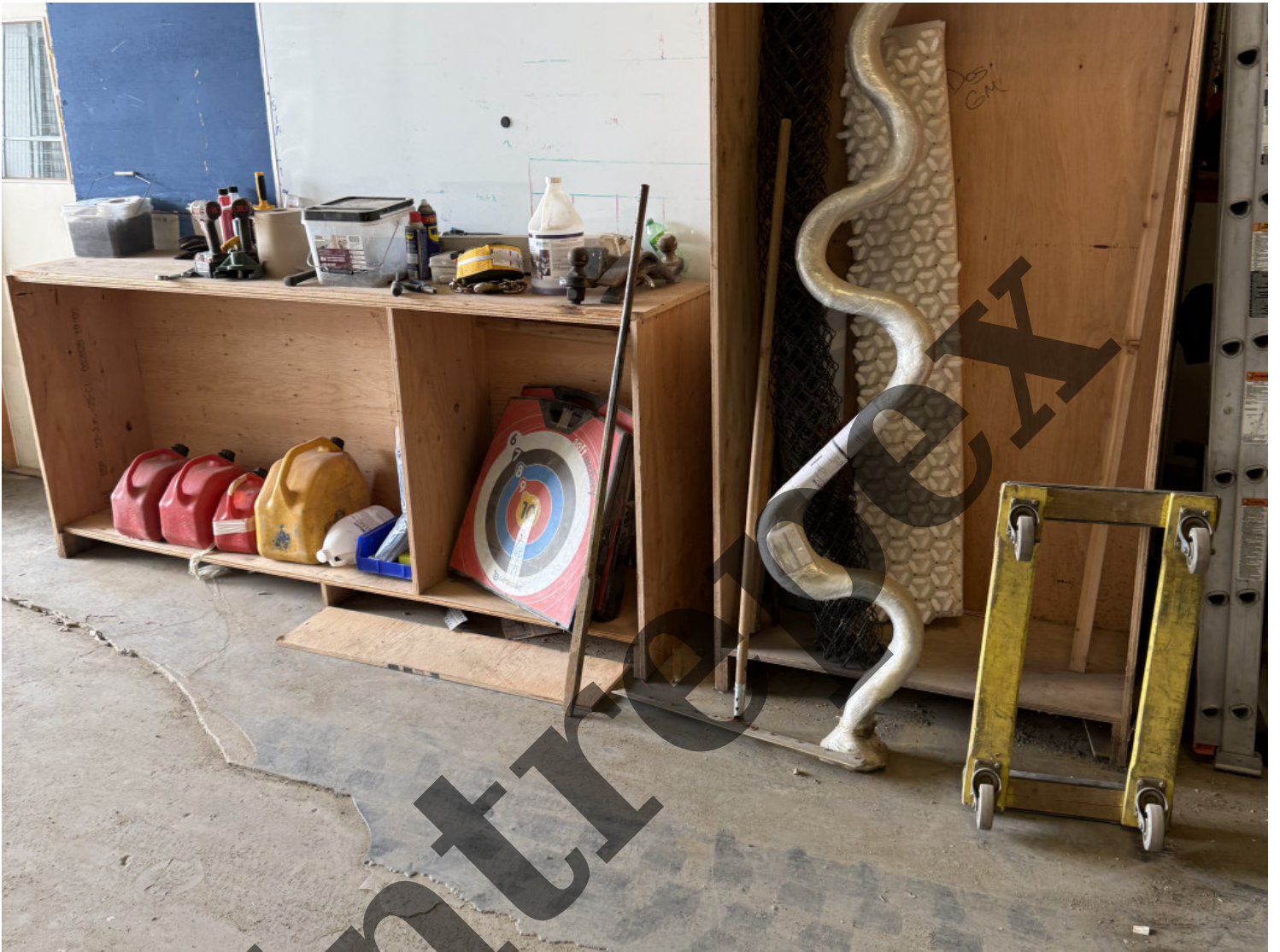
IMG_3597.jpeg



IMG_3596.jpeg



IMG_3601.jpeg



IMG_3600.jpeg



IMG_3599.jpeg



IMG_3604.jpeg



IMG_3603.jpeg



IMG_3602.jpeg



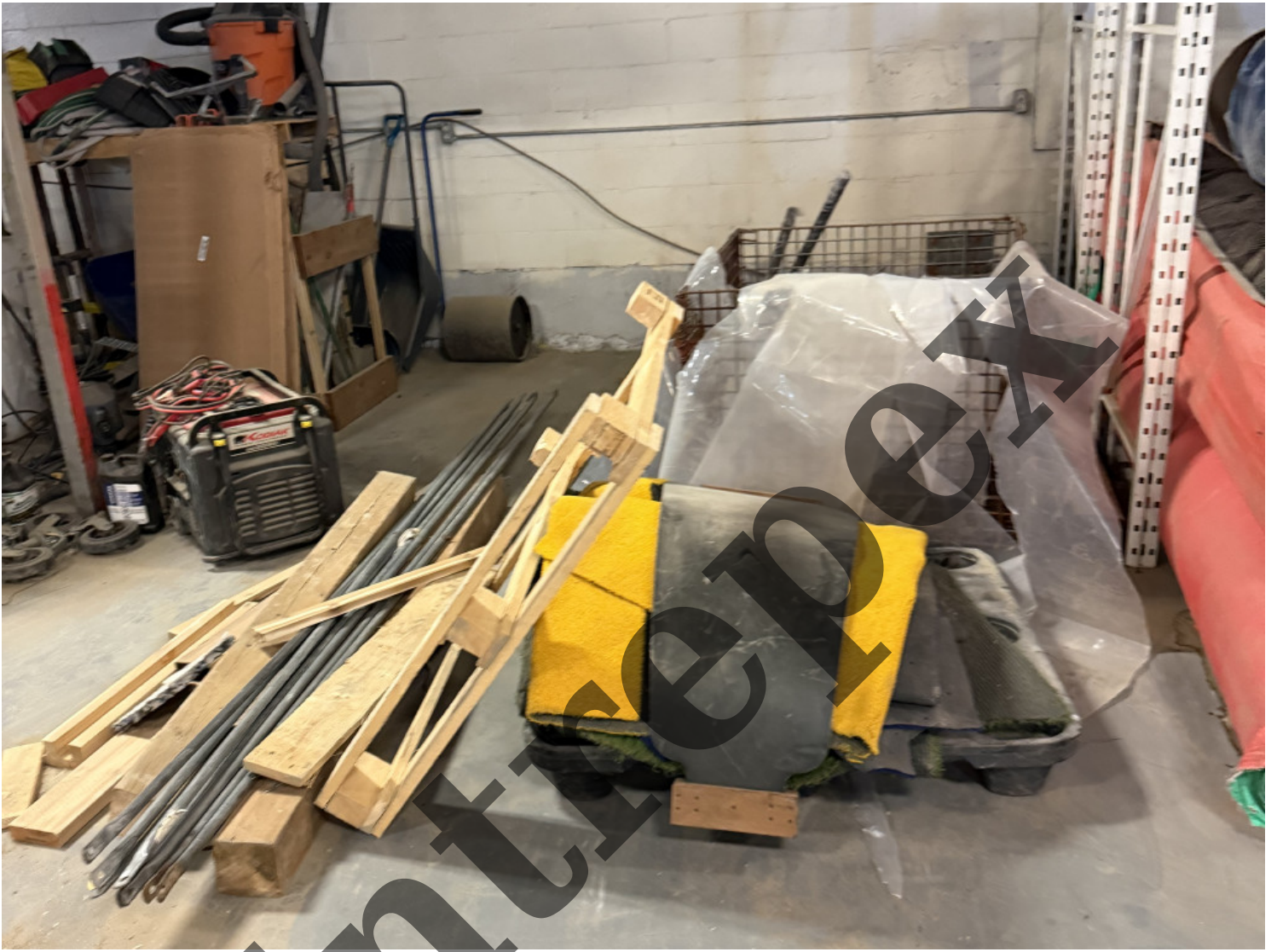
IMG_3607.jpeg



IMG_3606.jpeg



IMG_3605.jpeg



IMG_3608.jpeg



IMG_3611.jpeg



IMG_3610.jpeg



IMG_3609.jpeg



IMG_3612.jpeg



IMG_3615.jpeg



IMG_3614.jpeg



IMG_3613.jpeg



IMG_3616.jpeg



IMG_3617.jpeg



IMG_3625.jpeg





IMG_3627.jpeg



IMG_3628.jpeg





IMG_3630.jpeg



IMG_3629.jpeg



IMG_3633.jpeg



IMG_3632.jpeg



IMG_3637.jpeg



IMG_3636.jpeg



IMG_3635.jpeg



IMG_3640.jpeg



IMG_3639.jpeg



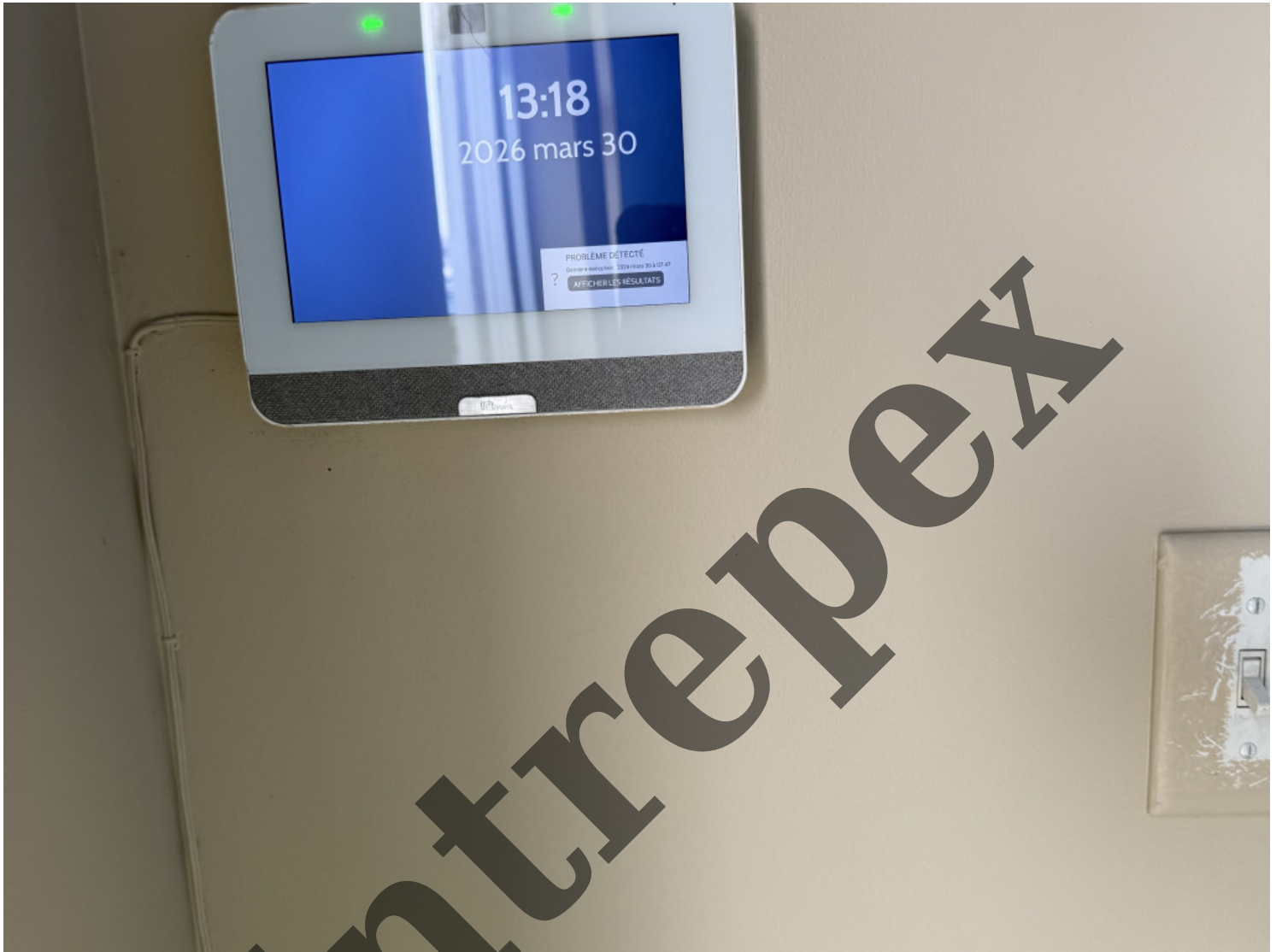
IMG_3638.jpeg



IMG_3643.jpeg



IMG_3642.jpeg



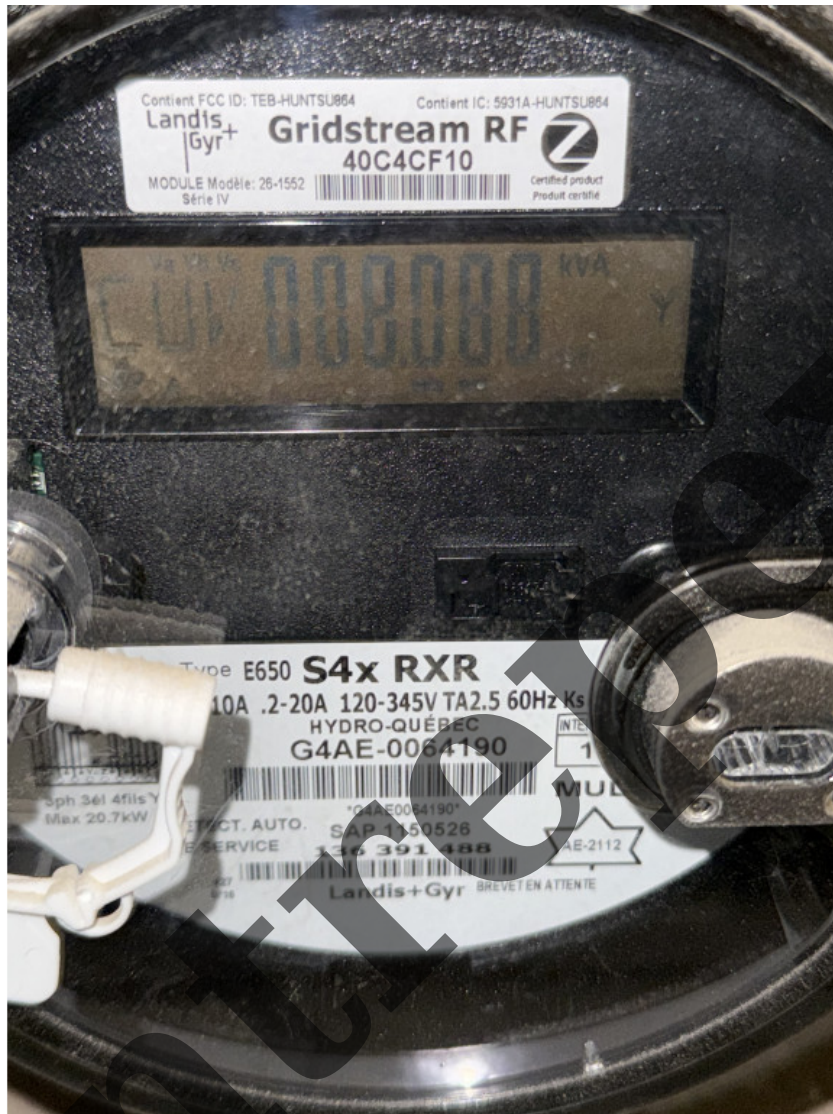
IMG_3641.jpeg



IMG_3634.jpeg



IMG_3623.jpeg



IMG_3486.jpeg



IMG_3489.jpeg



IMG_3491.jpeg

